

DUOBOND®

powered by



Panther Pro

TOOLS FOR THE PROFESSIONAL

Instruction MANUAL

Version 01 October 2024

SLIM FIT V1

automotive glass installation system.

*The Professional's Choice
For Fitting Automotive Glass*

Kit Ref: PP-WST299



Dear Customer,

You new SLIM FIT system is a mobile device intended for use by 1 user to aid in the installation of glass weighing up to 25Kg into motorized vehicles. It is not intended to lift anything other than vehicle glass. Only use this system in a professional application after receiving the correct training.

Please read these instructions and keep them safe, so as to have them to hand when needed.

We are not liable for any accidents or damages caused by non-compliance of these instructions.

TABLE OF CONTENTS

PREFACE	03
SAFETY INFORMATION	04
OVERVIEW	05
CONTENTS & SPECIFICATIONS	06
ASSEMBLY	07
OPERATION	08
INSPECTION	09
CERTIFICATION	10-11

PREFACE

- Please read this Instruction Manual carefully before you start using the electric winch. You will find many useful hints which will help you to use the system correctly.
- You are kindly requested to read this manual thoroughly, to follow scrupulously the instructions given and for safety reasons, avoid controlling, adjusting or performing procedures other than those specified.
- This winch has been designed and built in full compliance with machinery Directive 2006/42/EC.
- Foreword to the operating instructions The operating instructions are designed to familiarize the user with the winch and its designated use.
- The instruction manual contains important information on how to operate the Fit glass 40 System safely, properly and most efficiently. Observing these instructions helps to avoid danger, to reduce repair costs and downtimes and to increase the reliability and life of the winch.
- The instruction manual is to be supplemented by the respective national rules and regulations for accident prevention and environmental protection. The operating instructions must always be available wherever the system is in use. These operating instructions must be applied by any person in charge of carrying out work with and on the winch, such as operation including setting up, maintenance inspection
- Please read carefully before installing the machine. You will find many hints to keep the machine in its best condition, also to avoid the risk of accident.
- In addition to the operating instructions and to the mandatory rules and regulations for accident
- Prevention and environment protection in the country and place of use of the winch, the generally recognized technical rules for safe and proper working must also be observed.

Safety Information



- Always wear the correct protective equipment (safety shoes etc)
- It is not intended to lift anything other than vehicle glass.
- Do not touch the strap in movement
- Respect safe working load
- Do not over extend the strap
- Do not over extend the support arm
- Do not use in a wet or high wind environment
- Once the vehicle is correctly positioned centrally on the wheel base plate ensure that the vehicle cannot move by applying the hand brake and/or leaving the vehicle in gear if the handbrake is not functioning.
- Ensure that the wheel plate is secure before inserting the support arm
- Check the suction cups and that the winch is securely attached before lifting
- Do not let a secondary user assist you
- Before each use check the entire system for damage Do not use the system if any individual part is damaged
- Check that the winch has sufficient charge to complete the job or plug into a secondary 12v supply
- It is preferable to use the tool on level ground. If used on an incline be aware of the possibility of the arm rotating.
- Always ask for help / advise if you are not sure of the systems operation
- Adopt correct manual handling techniques.
- Keep members of the public at a safe distance
- Not for use in a ATEX environment
- Ensure that there is sufficient room between the plate upright and the car bodywork to be able to easily insert the support arm.
- Beware of any pinch points when unfolding the arm.
- **Keep the suction cup head attached when moving the strap to avoid tangling.**
- Always ensure that the locating pin is correctly located
- Do not remove the winch housing, all repairs should be carried out by a certified Panther Tools distributor.
- Only use on hard surfaces.
- Do not assist the winch in lifting the load.



I fully understand all the warnings herein

Name:..... Signature: Date:.....

Machine OVERVIEW

SLIM FIT

system is a mobile device intended for use by 1 user to aid in the installation of glass weighing up to 25Kg into motorised vehicles.

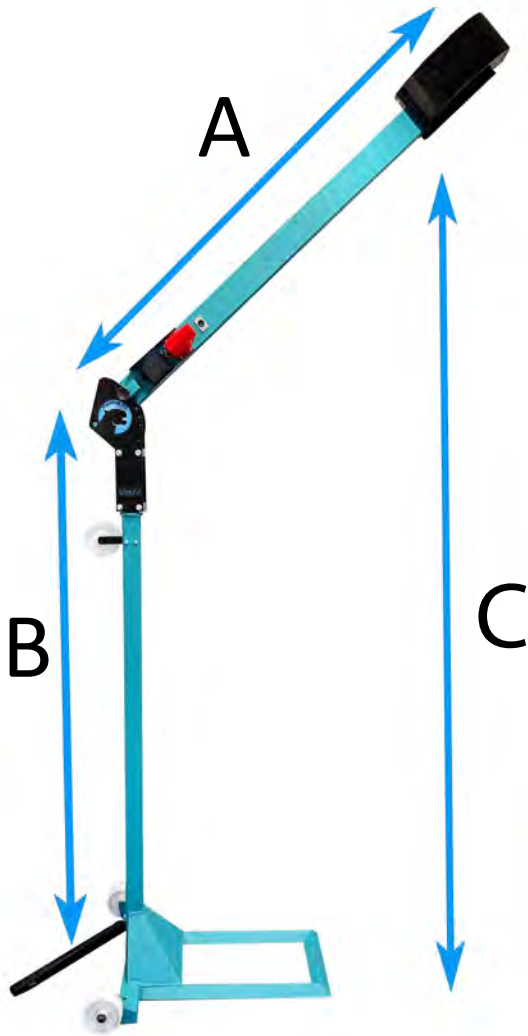
*Kit Ref: PP-WST299 COMPRISED OF:
PP-WST299S : SUPPORT FRAME
PP-WST299V: SUCTION CUP ASSEMBLY*



- A fully motorized glass removal and fitting system
- The Fit-Glass enables a one man fit of windscreens
- Unlike other one-man systems you do not fix the tool to the vehicle.
- With its hand held speed controller the technician can control with ease the speed of descent. This enables an easy and precise fit of glass even when it requires a "below bonnet / hood" replacement.

System

CONTENTS & SPECIFICATIONS



Model	SLIM FIT
Maximum load	25,00 kg 55 lbs
Length A	1630 mm 64inch
Length B	1650 mm 65 inch
Length C	1470 - 2700 mm 57 - 106 inch
Total Weight	25,00 kg 55 lbs



Model	Suction cup Frame
Maximum Load	250kg / 55lbs
Suction Cup	Ø 140 mm / 5.5 inch
Part Number	PP-WST299CUP



Model	Remote
Part Number	PP-WST299REM



Model	12V Cable
Part Number	PP-WST299CAB

SLIMFIT

Assembly

If you are using the system in a mobile situation and the parts are stored in your vehicle. we recommend keeping the SLIMFIT upright at the rear of the vehicle for a safe lift when removing them for use. Always refer to your company's manual handling regulations before lifting. Do not use in heavy rain, high winds and when there is a risk of lightning. On slopes the arm will rotate and settle at the lowest point.



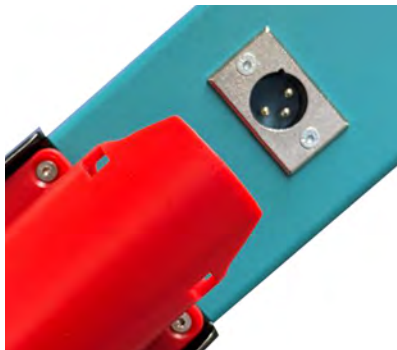
Find a level space, ensuring that there is enough room to walk around the vehicle with the piece of glass attached to the winch. Place the support arm wheel plate in front of the tyre that you will be using to hold the plate. **Extend the black safety arm.**

Drive onto the plate and then put the car in neutral so that it settles in the middle of the plate.

You can use the SLIMFIT on both sides of the vehicle to suit your preferred method.

WARNING

Always position the vehicle on the plate in a safe manner. Once the vehicle has settled ensure the handbrake is on and/or the vehicle is in Park or in Gear



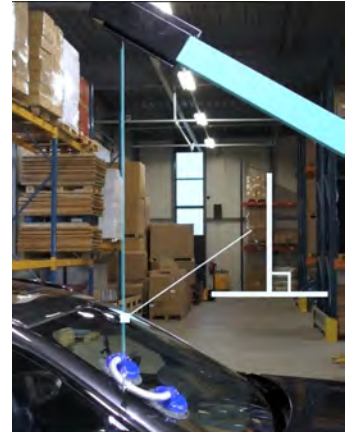
Choose which power source you want to use. 12V external power such as a cigar lighter socket. Or a 12v Milwaukee battery.(not supplied)



Adjust the height of the arm so that the lifting cord is directly above the middle of the edge of the windscreen.

Attach the suction cups to the windscreen with the rotating attachment point over the bodywork.

Then attach the cord to the frame.



WARNING

When raising or lowering the cord we recommend keeping the suction cups attached. This reduces the risk of the cord getting tangled in the winch head. If you can not pull on the cord to increase resistance



Attach your own suction cups to the opposite side of the glass.

You can now remove the old glass.

SLIMFIT OPERATION



Remove the damaged windscreen.



Use the speed controller to vary the speed of the cord.



Prep the new glass and attach the suction cup frame. Positioning the frame over the side of the windscreen allows you to rotate the glass off the stand.



If you apply bond to the aperture you can move the suction cup frame towards the middle of the windscreen. By doing this you will no longer be able to flip the glass. But the SlimFit will now hold more of the glass weight making it easier to install heavier pieces of glass.



Check out our YOUTUBE video <https://www.youtube.com/watch?v=uAOg-Q77OM8> for more help.

SLIMFIT

Inspection & Maintenance

The SLIMFIT is designed for minimum maintenance, however some safety checks are required.

Daily check list:

We strongly recommend the following checks are carried out on a daily basis and before using the system.

- **Examine** the cord for any signs of excessive wear. If the strap is cut do not use, If in doubt DO NOT USE
- **Ensure** that all parts are moving freely. If they do not move freely do not use.
- **Ensure** that the suction cups are clean and free of damage.
- **Examine** the carabiners and make sure they close correctly and are not damaged. If they do not close correctly do not use.
- **Check** that the metal work is free from structural damage and all the welds are intact. If structural damage is present or the welds are damaged do not use.
- **Ensure** that the head moves freely. If you do not have a full range of movement do not use.
- **Confirm** that the locating pins are free moving and locate correctly. If the pins do not locate easily and correctly do not use
- **Check** that the remote works correctly and when you let go of the control button the winch stops. If this does not happen do not use
- **Confirm** that the battery has enough charge to complete the task.

Periodic check list:

- Every 6 months replace suction cups
- Take apart all the different elements of the system. Inspect all areas for damage and ensure that they are clean and free from dirt.

Call your distributor if you find any part of the system that appears to be defective.

ALL REPAIRS ARE TO BE CARRIED OUT BY AN AUTHORIZED DEALER

Always abide by your country's inspection legislation.

EC Declaration of Conformity

in accordance with the following Directives:

2004/108/EC	The Electromagnetic Compatibility Directive
2006/42/EC	The Machinery Directive

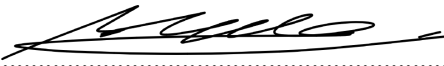
in conformity with the following standards

Ref. No.	Title
BS EN ISO 12100	Safety of machinery. General principles for design. Risk assessment and risk reduction
BS EN 14492-2	Cranes. Power driven winches and hoists. Power driven hoists
BS EN 61000-6-1	Electromagnetic compatibility (EMC). Generic standards. Immunity for residential, commercial and light-industrial environments
BS EN 61000-6-3	Electromagnetic compatibility (EMC). Generic standards. Emission standard for residential, commercial and light-industrial environments

I hereby declare that the equipment named below has been designed to comply with the relevant sections of the above referenced specifications and is in accordance with the requirements of the Directives.

Equipment	Replacement windscreen hoist (SlimFit)
Model number	PP-WST299
Serial Number	xxxx

Panther Tools and Products Ltd
Unit D, Vanguard Buildings, Britannia Road, Chesterfield, S40
2TZ, UK

Signed by: 

Name: Mr Mark Holmes
Position: Director
Done at: Chesterfield
On: _____



The technical documentation for the machinery is available from the above address.

UKCA Declaration of Conformity

in accordance with the following Directives:

Electromagnetic Compatibility Regulations 2016

Supply of Machinery (Safety) Regulations 2008

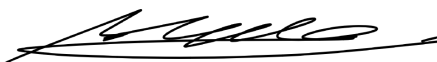
in conformity with the following standards

Ref.No.	Title
BS EN ISO12100	Safety of machinery. General principles for design. Risk assessment and risk reduction
BS EN 14492-2	Cranes. Power driven winches and hoists. Power driven hoists
BS EN 61000-6-1	Electromagnetic compatibility (EMC). Generic standards. Immunity for residential, commercial and light-industrial environments
BS EN 61000-6-3	Electromagnetic compatibility (EMC). Generic standards. Emission standard for residential, commercial and light-industrial environments

I hereby declare that the equipment named below has been designed to comply with the relevant sections of the above referenced specifications and is in accordance with the requirements of the Directives.

Equipment	Replacement windscreen hoist (SlimFit)
Model number	PP-WST299
Serial Number	_____

Panther Tools and Products Ltd
Unit D, Vanguard Buildings, Britannia Road, Chesterfield, S40
2TZ, UK

Signed by: 

Name: Mr Mark Holmes

Position: Director

Done at: Chesterfield

On: _____

UK
CA

The technical documentation for the machinery is available from the above address.



Panther Pro

TOOLS FOR THE PROFESSIONAL



Tips

Always place the vehicle squarely on the support foot before inserting the mast. Failure to do this will result in the winch support mast falling over.

Whenever possible use the SLIMFIT system on level ground. Uneven ground may result in an unexpected rotation of the arm. When installing the arm ensure that the middle of the horizontal support is aligned with the middle of the vehicle.

Look at the video on our web site before using the tool. If you require any further information please contact Panther Tools. You can use the system on either side of the vehicle.

Panther Tools and Products Ltd

*Unit D, Vanguard Buildings
Britannia Road Chesterfield*

S40 2TZ

Tel: +44(0)1246 559337

Panther Pro Inc

*1625 South Main Street Keller
Texas 76248*

Tel: +1(940)648-3305

Technician Signature:.....

Date of Training:.....