



# AUTOREP DIGITAL

Réf - PP-WST320

Automatic glass Impact Repair System





AN EXCLUSIVE CREATION

**Panther Pro**

The Autorep Digital is one of the simplest impact repair systems on the market. Fully autonomous, it operates on battery power. Once the injection bridge is properly positioned, select the type of impact to be repaired, add the repair resin, and initiate the repair. When the process is complete, finalize the repair with finishing resin and cure it with the UV lamp.

## STANDOUT FEATURES

-  Fully self contained system
-  Completely Automated

### COMPOSITION :

- x1** Autorep Digital Case
- x1** 220V Charger
- x1** Injection Bridge
- x1** 2.50m Air Hose
- x1** Standard Injector
- x5** Injector Seals
- x1** 12V UV LED
- x1** Cordless Drill
- x2** Carbide Drill Bits
- x25** UV Sheets
- x1** Mirror
- x10** Razor Blades
- x1** Polishing Head
- x1** Suction Cup Gel
- x1** Glass Polish 80ml
- x1** Repair Resin 10ml
- x1** Pit Fill Resin 10ml
- x1** Prep Clean 10ml



P-1





# Panther Pro

Groupe **Vsf**

## USER GUIDE

### HOW TO USE IT ?

#### STEP 1 – Starting the Device

Press the power button located on the right side of the screen.  
Hold the button until you hear the BEEP.



HELPFULL TIPS

#### Panther Pro

When charging the tool, always connect the charger to the device before plugging it into the power source.

#### STEP 2 – Screen and Programs

Turn on the device. The welcome screen will display. *Access all programs on page 3.*

In "Settings," you can select the language and view tool statistics.

Choose the program based on the impact shape. For acoustic windshields, click the dedicated icon. Follow the on-screen guidance.


At the end of the program, an audio signal will notify you that the repair is complete. No need to rush back as the device maintains pressure until you press stop.



P-2





Program	Specificity	Duration of repair
Quick	For small and simple impacts (<1 cm).	6min
Star	For star-shaped impacts; requires more time.	12min30
Bull's Eye	For complex bull's eye damage uses low pressure to avoid air rings	12min
Combinaison	For combined impacts (star + bull's eye with cracks).	15 min
Acoustic	For impacts on acoustic windshields. Always choose this program for acoustic windshields. Check the glass for the logo.	19 min
Pulse	Quick variations between pressure and vacuum helps to penetrate the resin.	1 min
Manual	Custom program. Set repair type, pressure, depression duration, etc. yourself	NC
Exit	Function to turn off the device 	
Settings	Adjust device language and view tool statistics.	





### STEP 3 – Preparing the Impact

**1** Place the mirror inside the vehicle, under the impact point.

**2** Spray cleaner onto a clean paper and clean around the damage.

**ATTENTION**, Do not spray directly onto the damage.

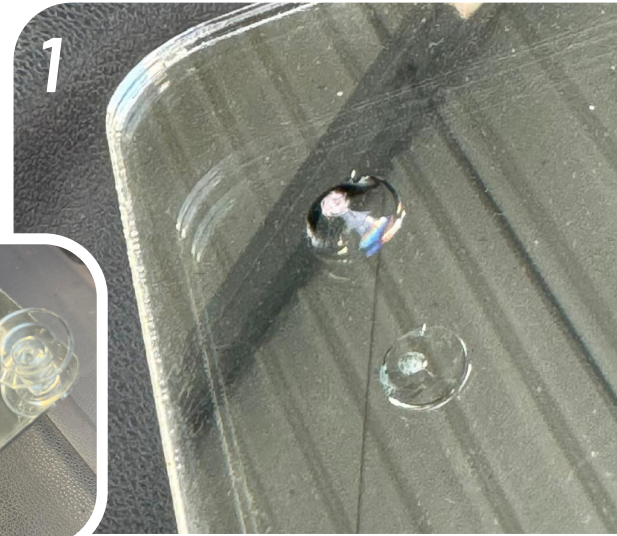
Using a clean paper, apply "Prep Clean" to the impact area.

- **If the impact disappears after applying Prep Clean, drilling is unnecessary.**

Use the edge of a razor blade to remove any glass particles.

- **If the repair does not change after the Prep Clean you will need to drill to create an entry point into the damage.**

Take the cordless drill and with a carbide burr position the drill at 45 degrees to the glass and gently drill out and glass that is blocking the damage pit.







# Panther Pro

Groupe **VSF**

## USER GUIDE

**3** Apply a small amount of suction cup gel to the suction cup for better adherence to the glass.

**4** Properly position the injector above the impact point. And centralize the damage in the middle of the circle where the injector is inserted. Ensure the injection bridge's three feet gently touch the glass. Do this by tightening the black knob until resistance is felt when you move the metal arm.

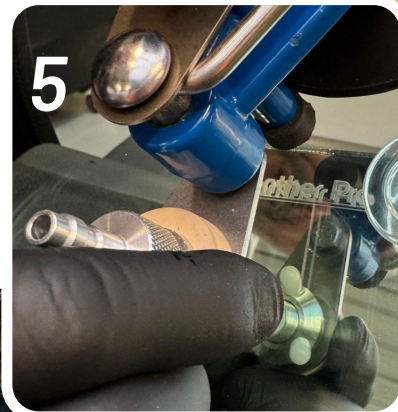
*When you remove the bridge remember to unscrew the knob to avoid excess pressure on your next job.*

**5** Gently screw in the injector barrel. Once it touches the glass give it a further 1/2 turn to make sure a good seal is created and ensure that the seal is covering the impact point of the damage.

**6** Add three drops of repair resin to the injection chamber.

**ATTENTION**, make sure that the temperature of the resin is similar to that of the glass. Ideally between 15-25 deg celcius.

**7** Attach the air tube to the machine and the injector



P-5





# Panther Pro

Groupe **Vsf**

## USER GUIDE

### STEP 4 – The Repair Process

**1** Select the appropriate program (e.g., "Bull's Eye") and press "Play."

If air remains, use the Rezinator during the vacuum cycle.

Let the Autorep complete its program.

The Autorep will beep a few seconds before the repair cycle is finished and then a long beep to let you know the program has finished. Again no need to rush back as the system keeps the repair under pressure until you are ready to proceed to the next step.

**2** Once the program has finished you have 2 choices :

- **You are happy with the repair.**  
Press Stop and continue with the final stages...
- **You feel the repair could be better :**  
You can re run the program this time using the Rezinator to help remove any trapped air. Or go into manual mode and try more pressure or vacuum cycles.



### REZINATOR\* : FOR THE HARDER TO REPAIR DAMAGES



P-6





# Panther Pro

Groupe Vsf

## USER GUIDE

### 3 Use UV sheets and pit filler.

**ATTENTION**, Take care when handling the UV sheets so as not to contaminate them with your fingerprints and other dirt.

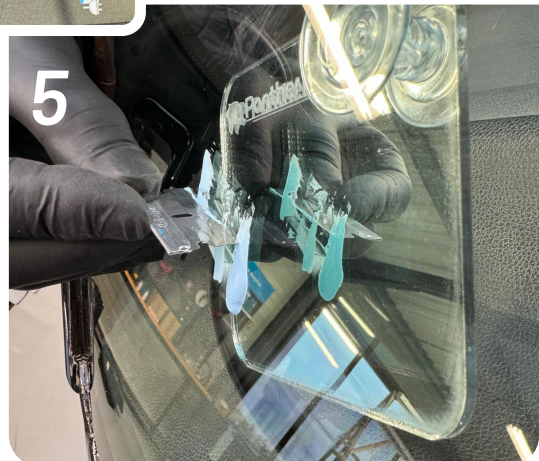
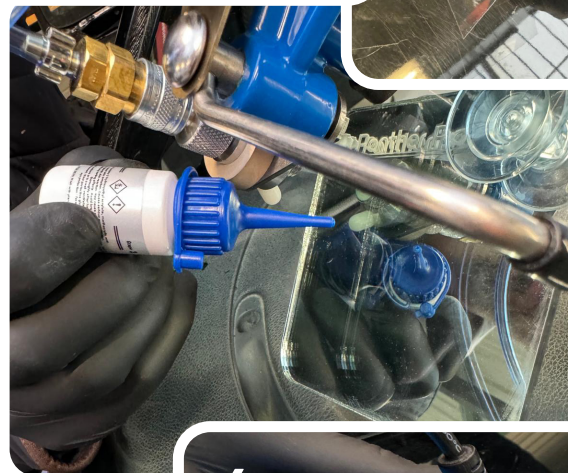
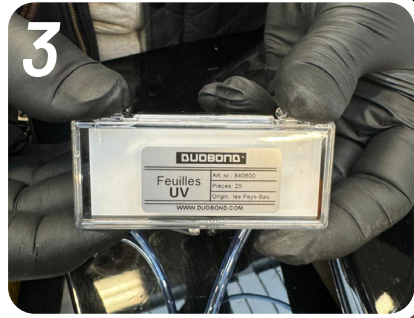
Just above the impact point drop some pit fill resin and let it run down over the impact point, as this moment gently lay the UV sheet over the repaired area.

**ATTENTION**, Do not push down on the sheet as this will cause a crater and the final visual result will not be as good.

### 4 Plug the cigar cable into the UV lamp and then into the Autorep. Turn on the lamp and place over the UV sheet to cure the resin. Wait until the UV lamps turns off and check that the resin is fully cured.

### 5 Check that the repair is dry.

- **If the resin is fully cured.**  
Drip some Pit Fill Poish onto the cured resin and using a razor blade at 90° to the glass scrape of the excess resin.
- **If the resin does not appear fully cure.** Repeat step 4



P-7





# Panther Pro

Groupe **Vsf**

## USER / GUIDE

**6** Polish the repaired area using the drill with a polishing head and cream.

**Maintenance and Care:** Clean the injection chamber and tools after use to prolong their lifespan. Turn off and recharge the device to maintain battery health

